

# GARMIN inReach<sup>®</sup> MINI | Lightweight Satellite Communication Device

## Quick Start Guide

To see the latest product information updates, visit the Garmin Support Center at <https://support.garmin.com/en-US/>  
Part # 010-01879-00  
A Product of Garmin Ltd.

The Garmin inReach<sup>®</sup> MINI is a miniature satellite communication and Global Positioning Unit (GPS) intended for backcountry use. The user can request emergency rescue services, record and track their location, and send preset or custom text messages.

### NOTICE!

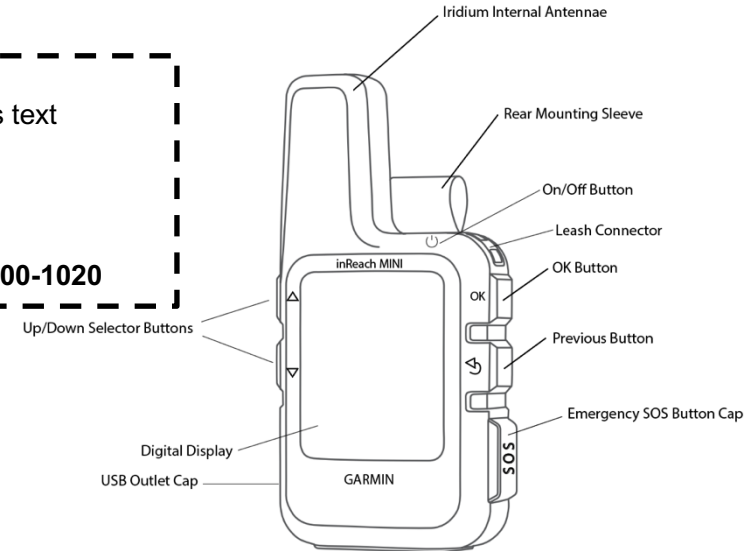
This device **REQUIRES** an active subscription to use all features requiring satellite communication, such as text messaging, location tracking and emergency services.

You **MUST** activate your device before turning it on or attempting to use it!

To activate your device and view subscription information, please visit [explore.garmin.com](https://explore.garmin.com) or call **1-800-800-1020**

### Before you start:

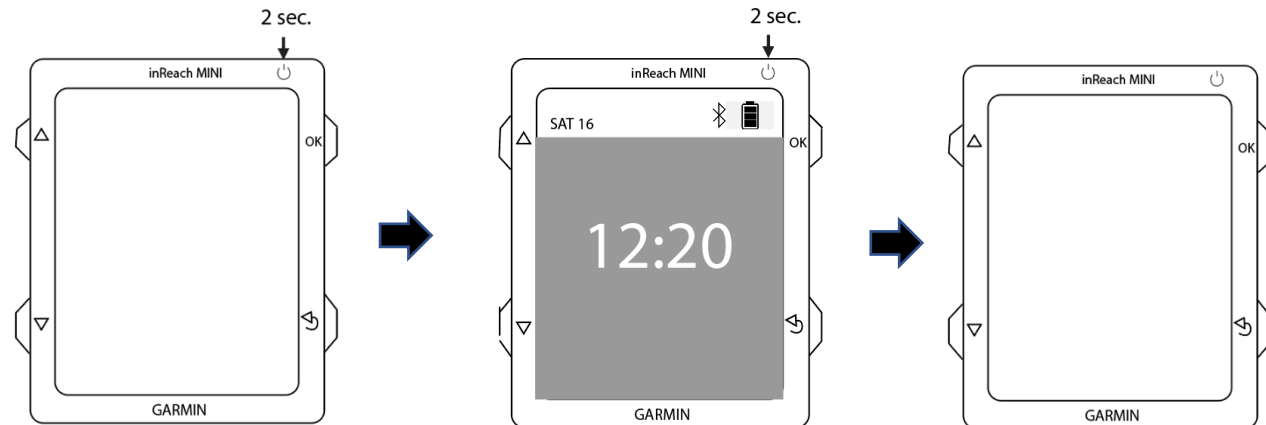
- Familiarize yourself with the device's layout using the labeled diagram to the right.
- See the *Important Safety and Product Information* guide for product warnings and other important information.
- **NOTE:** The **USB Outlet** and the **Emergency SOS** button have removable caps to guard against the elements and accidental activation.



Above image © Garmin

### Turning the inReach MINI On/OFF

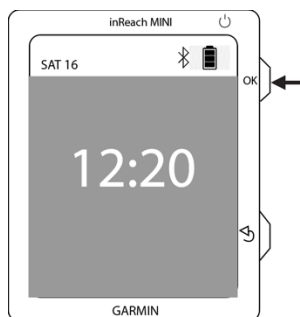
1. To turn the device on, press and hold the **On/Off** button as shown  
When the time and date appear on the **Display**, the device is ready for use.
2. To turn the device off, press and hold the **On/Off** button a second time.



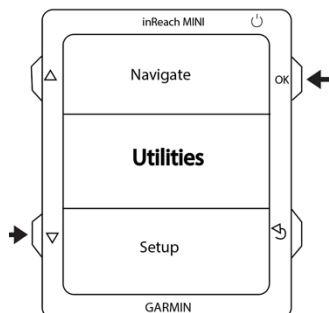
## Testing the Device

\*\*\*Unofficial Sample\*\*\*

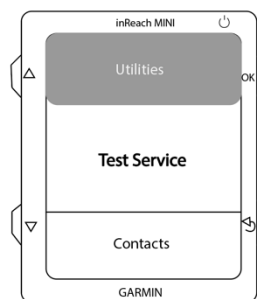
1. Ensure the **Antennae** has a clear view of the sky.
2. Press **OK**.



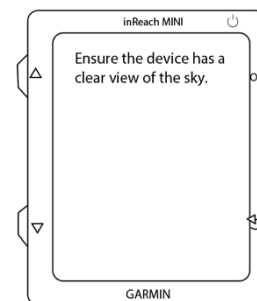
3. Press the **Down Selector** button until Utilities is centered/selected on the **Display**.
4. Press **OK**.



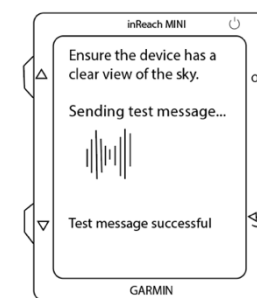
5. Select Test Service on the **Display**
6. Press **OK**.



7. Scroll down to read the instructions on the **Display**.
8. Press **OK** to start the test.

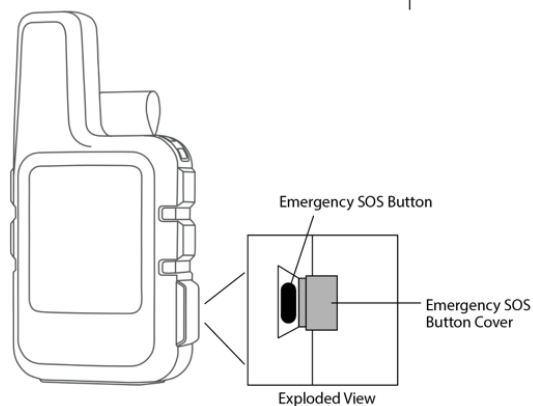


9. Monitor the progress bar on the display until the test is complete.



## Using the Emergency SOS Function

1. Lift the protective **Emergency SOS** button cap.
2. Push and hold the black **Emergency SOS** button



3. Wait for the countdown on the **Display** to complete.
4. Once the countdown is complete, the device sends an automated message to GEOS with information about your location.
5. Follow the prompts on the **Display** to confirm contact with emergency response services.

### Notice!

The **Emergency SOS Function** sends an irreversible message to the GEOS International Emergency Rescue Center, who will then coordinate with local response teams to assist in your emergency. **This feature should only be used in a true emergency!** After the SOS function has been activated, the device cannot be turned off.

## Canceling the Emergency SOS Function

If you have activated the Emergency SOS function but no longer need assistance, you can cancel a rescue after it has been sent to emergency services.

1. Lift the protective **Emergency SOS Button Cap**.
2. Push and hold the black **Emergency SOS Button**.
3. Follow prompt on the **Display**.
4. Confirm the cancellation by pressing the **OK Button**.

